



LHGC SPOTLIGHT

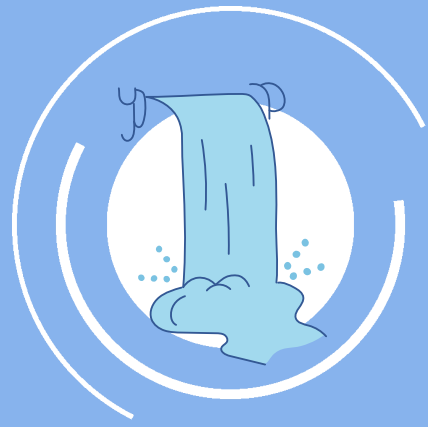
▷▷▷ is on Julie Hoppock



SOME BASIC FACTS

- ♥ Lived in Derby, Kansas for 42 years, a suburb of Wichita (And, no, she doesn't know "Dorothy!")
- ♥ Moved to Keowee Key in October 2018 and we just love it!
- ♥ Worked for Boeing; also worked as a Manufacturing Planner for an Engineering Department, writing specs and manufacturing instructions for production
- ♥ Has 3 sons

JULIE'S FAVORITES



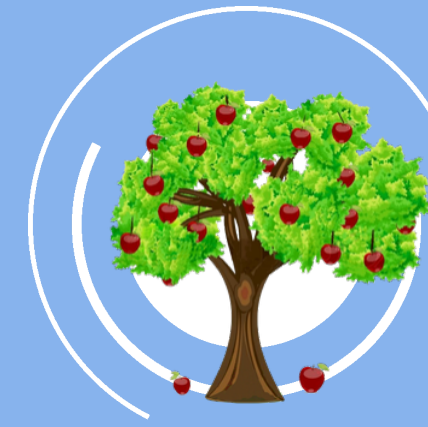
Exploring the
Upstate,
Especially the
Waterfalls



Boats and
Beach-ups



Hiking



Orchards,
peaches, and
apples



The
PEOPLE!!

HOW I GOT INVOLVED WITH THE LHGC



- ✚ I invited myself to a meeting and just started meeting people!
- ✚ I have gotten involved with identifying Cherokee Trail Trees and hope to spend a lot more time searching for trees and understanding what they mean.