

A close-up photograph of several pink azalea flowers with prominent stamens, set against a blurred green background. The flowers are the central focus of the image.

Colorful Shrubs *for an Upstate Ecology*

Jon Fritz, BLA
Landscape Designer/Owner
Bluestem Landscape Design

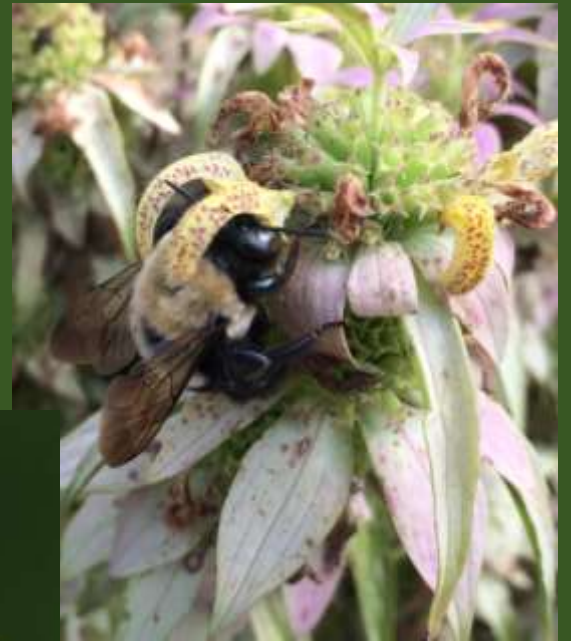






1. Native
2. Pollinator & Wildlife Attracting
3. Tolerant of Conditions
4. Deer Resistant(ish)
5. Low Maintenance
6. Available on the Market







Moisture- Soil Type- Sun- Climate





A close-up photograph of several pink azalea flowers in bloom. The flowers have five petals and prominent, long, thin stamens that extend far beyond the petals. The background is a soft, out-of-focus green, suggesting foliage. The overall lighting is natural and soft.

Colorful Shrubs
for an Upstate Ecology

Red Buckeye

Aesculus pavia



Painted Buckeye

Aesculus sylvatica



Serviceberry *Amelanchier sp.*



Autumn Brilliance Serviceberry
Amelanchier x grandiflora 'Autumn Brilliance'

American Beautyberry

Callicarpa americana



Sweetshrub/ Carolina Allspice

Calycanthus floridus



Burgundy Spice Sweetshrub
Calycanthus floridus var. *purpureus* 'Burgundy Spice'



Aphrodite Sweetshrub
Calycanthus floridus 'Aphrodite'

Summersweet *Clethra alnifolia*

Ruby Spice Clethra *Clethra alnifolia* 'Ruby Spice'



Sixteen Candles Clethra *Clethra alnifolia* 'Sixteen Candles'



Fothergilla

Fothergilla major



Blue Shadows Dwarf Fothergilla
Fothergilla gardenia 'Blue Shadows'



Mt Airy Fothergilla
Fothergilla x 'Mt Airy'

Witch Hazel

Hamamelis sp.



Common Witch Hazel
Hamamelis virginiana

Jalena Witch Hazel
Hamamelis x intermedia 'Jalena'

Oakleaf Hydrangea

Hydrangea quercifolia



Ruby Slippers Oakleaf Hydrangea
Hydrangea quercifolia 'Ruby Slippers'

St. John's Wort

Hypericum sp.



Bushy St John's Wort
Hypericum densiflorum



Sunburst St John's Wort
Hypericum frondosum 'Sunburst'

Inkberry Holly

Ilex glabra



Strongbox® Inkberry
Ilex glabra 'ILEXFARROWTRACY'

Winterberry Holly

Ilex verticillata



Winter Red Winterberry
Ilex verticillata 'Winter Red'

Male Winterberry
Ilex verticillata 'Southern Gentleman'

Anise Shrubs

Illicium parviflorum



Florida Anise
Illicium floridanum



Pink Frost Anise
Illicium floridanum
'Pink Frost'

Virginia Sweetspire

Itea virginica



Dwarf Virginia Sweetspire
Itea virginica 'Little Henry'



Virginia Sweetspire
Itea virginica 'Henry's Garnet'

Eastern Red Cedar *Juniperus virginiana*



Grey Guardian Juniper
Juniperus virginiana 'Greguard'



Grey Owl Juniper
Juniperus virginiana 'Grey Owl'

Mountain Laurel

Kalmia latifolia



Red Mountain Laurel
Kalmia latifolia 'Sarah'



Doghobble

Leucothoë fontanesiana



Scarletta Fetterbush

Leucothoë fontanesiana 'Zeblid'

Wax Myrtle

Morella cerifera



Don's Dwarf Wax Myrtle
Morella cerifera 'Don's Dwarf'



Ninebark

Physocarpus opulifolius



Center Glow™ Ninebark
Physocarpus opulifolius 'Center Glow'

Rhododendron

Rhododendron sp.



Nova Zembla Rhododendron
Rhododendron catawbiense
'Nova Zembla'



Catawba Rhododendron
Rhododendron catawbiense



PJM Rhododendron
Rhododendron x 'PJM'

Native Azaleas

Rhododendron sp.



Pinxter Rhododendron
Rhododendron periclymenoides



Flame Azalea
Rhododendron calendulaceum



Native Azalea Hybrids
Rhododendron x

American Arborvitae

Thuja occidentalis



Golden Globe Arborvitae
Thuja occidentalis 'Golden Globe'



Firechief™ Arborvitae
Thuja occidentalis 'Congabe'



Little Giant Arborvitae
Thuja occidentalis 'Little Giant'

Yucca

Yucca filamentosa



Colorguard Yucca
Yucca filamentosa 'Color Guard'



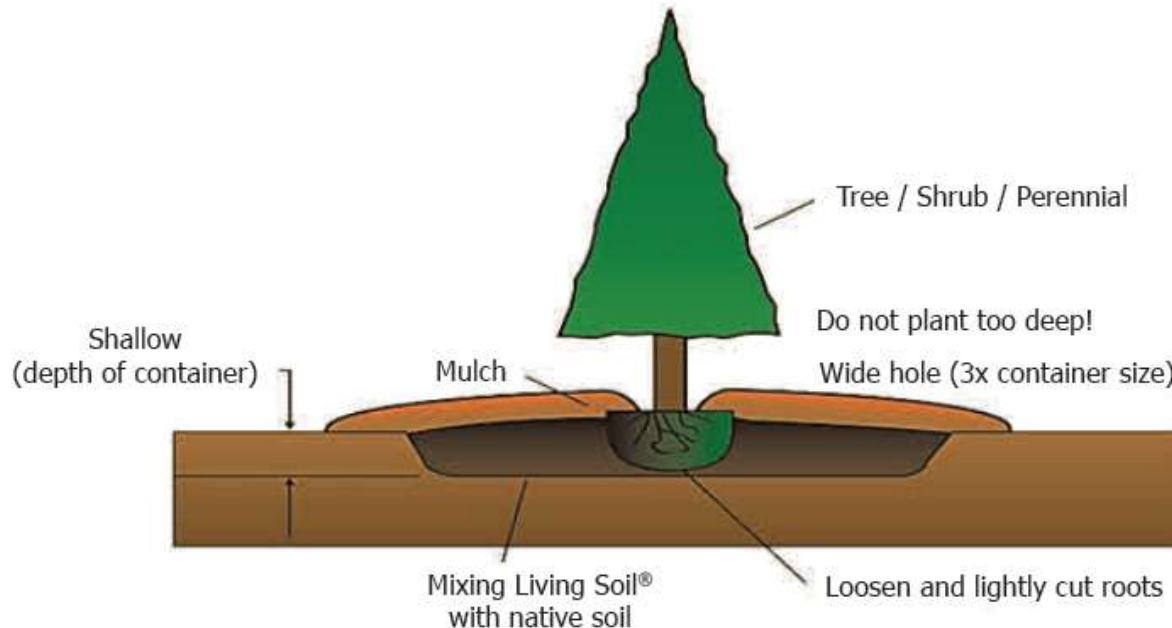


Q&A

*If you need to return a plant please bring the receipt (showing the purchase of the plant and the *Living Soil*® amender on the same receipt), along with the plant for the inspection and identification. If the return is approved, you will receive a replacement plant or a Zone 7, Inc. store credit. No cash or credit card refunds will be given.

We require the use of our *Living Soil*® due to the nature of our natural soil. It is made up of sea kelp extract, B vitamins, humic acids, and beneficial bacteria called Mycorrhizae. Mycorrhizae are the “living” elements of *Living Soil*®. They permanently attach themselves to plant root systems, improving uptake of moisture and nutrients, reducing transplant shock, improving drought tolerance and accelerating plant growth. *Living Soil*® should be mixed with the native clay soil at the recommended rates listed.

It is also important to prepare the hole for the plant according to the following diagram:



LANDSCAPE CENTER
OUR DIFFERENCE
WILL GROW ON YOU.™

zone7nursery.com

410 Sheep Farm Road
Seneca, SC 29672
Phone: (864) 882-7771
Fax: (864) 882-7034



The background of the entire image is a close-up photograph of several pink azalea flowers. The flowers are in various stages of bloom, with some showing prominent stamens. The lighting is soft, and the colors range from light pink to a deeper magenta. The text is overlaid on this background.

Local Plant Sales

SC Native Plant Society
Spring Plant Sale
April 10- May 1
(online)

SC Botanical Gardens
Spring Plant Sale
April 12-23
(online)



Jon Fritz, BLA
Landscape Designer/Owner
Bluestem Landscape Design

bluestemlandscapedesign@gmail.com

864-630-1875